

FEATURED: **SARA FOSTER'S
L.A. HAVEN**

TREND REPORT: **TIMELESS
CHARACTER**

EAT + DRINK: **ALL-AMERICAN
CLASSICS**

CAMBRIA

Issue 25

STYLE



KITCHEN CHIC

DESIGN INSPIRATION FOR YOUR
NEW FAVORITE SEAT IN THE HOUSE



CAMBRIA®

OAKLEIGH™



C A M B R I A[®]



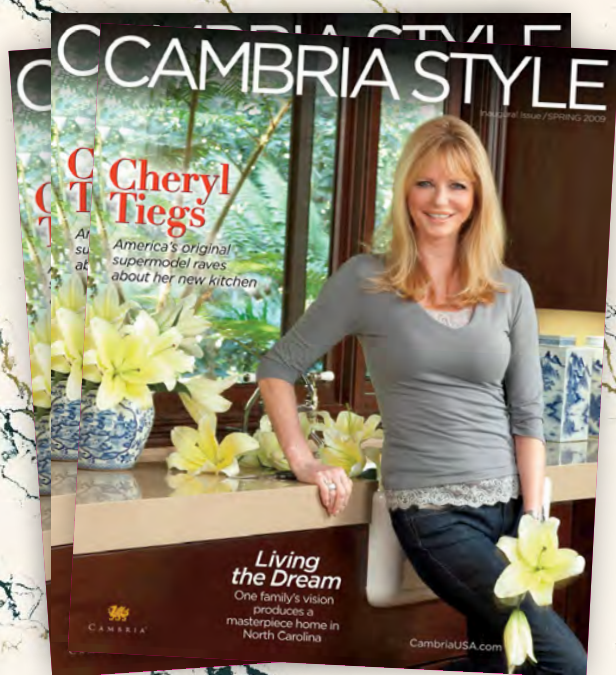
EVOLVED.
EXTRAORDINARY.
UNEXPECTED.

Explore designs with never-before-seen
alloy veining at **CambriaUSA.com**.



FAMILY OWNED
AMERICAN MADE





OAKLEIGH™



MARTY DAVIS
President/CEO

Marty Davis

LEADING THE WAY

Enjoy this our 25th issue of *Cambria Style*. We began our Cambria magazine in 2009 with our friend and brand advocate Cheryl Tiegs donning the first ever cover of *Cambria Style*. So much has happened since that inaugural issue, most notably the designs of Cambria have taken an extraordinary path. From monochromatic dazzling color to our wide-ranging Quarry Collection™ in 2005, followed shortly thereafter with a bold move for Cambria quartz designs, which was the unique advent of flow and patterned movement in our 2011 Waterstone Collection™. From there, we expounded not only

our design palette but the entire quartz industry worldwide with our now famous luxury Marble Collection™ born in 2015. Cambria's Marble Collection™ still remains breathtaking in its industry-leading design movement for quartz and leads the category into our newest looks—the 2021 launch of Cambria's Inverness™ designs showcasing subtle texture with warm, soft pillow-like calm. This was quickly followed by our 2022 launch of the Berkshire™ designs featuring alloy-veined surfacing with the same beauty and durability that has come to define Cambria as the leading quartz surface brand and the most premier quartz in the United States and throughout the world.

Soon to follow, our many luxury marbled designs, sleekly combined with these unique Inverness and Berkshire techniques, bringing even more state-of-art aesthetic from the world leader in quartz surface design, Cambria.

Stay tuned, the beauty and artistry of next-generation Cambria is just around the corner.

FEATURES

30

WEEKEND RETREAT

Refined décor welcomes guests to Canada's wine country on the shores of Lake Ontario.

36

IN REAL LIFE

Sara Foster—model, actress, podcaster, and fashion entrepreneur—on the importance of a family-friendly home.

42

GOING OFF SCRIPT

Maximalist interior designer Sasha Bikoff channels her inner nature girl in a Hamptons hideaway.



STYLE & DESIGN

- 10 **TREND REPORT**
Creative concepts that incorporate mixed materials, natural elements, and beautifully distinctive finishing touches.
- 16 **CRAFTED**
Bright Ideas for Interior Lighting
- 18 **STYLE FILES**
Designed for Wellness
- 22 **STYLE FILES**
Renewed with Character
- 26 **STYLE FILES**
Inspired by Nature

PURSUIITS

- 52 **DESTINATIONS**
Catches of the Day
- 54 **EAT**
Fusion-Inspired Classics
- 58 **DRINK**
Zero Proof

- 62 **SOURCEBOOK**
- 66 **LAST LOOK**





INTENTIONAL FOCUS

There is no doubt that by focusing on goals and planning for the future, you can drive the business forward. But it's also important to take a breath, to pause and appreciate how far you've come, to enjoy the view after a climb, and to celebrate your accomplishments—all those steps that, one by one, led to achieving your goals.

At Cambria, the daily climb involves our collaborative pursuit of excellence in everything we do from the manufacturing of the finest quartz countertops to the publication of this award-winning and inspirational design and lifestyle magazine. And we want to invite you into our celebration.

This is the 25th issue of *Cambria Style* and it truly is a celebration of accomplishments—over a decade of being intentional in our focus—highlighting inspirational designers, featuring captivating celebrities, and displaying our elegant and innovative quartz surfaces in uniquely beautiful settings.

Like a collection of incredible memories, *Cambria Style* shows off where we've been and what we love about what we do. How an ambitious and innovative company filled with creative minds helps make spaces, from the everyday to the

extraordinary, be even more beautiful, functional, and stylish.

In these pages, you can see how the creativity and craftsmanship of our hardworking teams helped make interior designer Sasha Bikoff's garage floor a showpiece and a New York City restaurant she designed feel like a vacation destination. These stories and everything in between in this issue have elements that will spark the imagination.

This issue also provides a peek at where we're headed as Cambria continues to pursue innovation and deliver inspired designs, all while encouraging you to enjoy the beautiful views with us.



CAROL OLSON
Chief Marketing Officer



THE *CAMBRIA* STYLE BLOG IS JUST A CLICK AWAY

Discover even more décor trends and design inspiration along with celebrity home tours, renovation stories, and expert interior design tips.



Visit CambriaUSA.com/Style

CAMBRIA

STYLE
A CAMBRIA PUBLICATION

President/CEO
Marty Davis

Vice President Brand Marketing
Kelsey Dodson-Smith

Publishing Director
Angela Johnson

Creative Direction & Design
Jenna Lalley, Adventure™

Project Management
Adventure™

CREATIVE & PUBLISHING PARTNER

HUDSONONE MEDIA LLC

President/CEO
Steven Mandel



Group Publisher
Janice Browne

Contributing Editor
Paul Hagen

Print Management
Hudson One Media

Circulation
Thomas Smith

© 2023 by Cambria Company LLC.
All rights reserved. Reproduction of
this magazine, in whole or in part,
is prohibited unless authorized by
Cambria Company LLC.

Cambria®, Cambria Style®,
Cambria Matte®, , Cambria design
and collection names, Cambria AR™,
and DragonVision™ are all trademarks
of Cambria Company LLC. Cambria is
a registered trademark in Canada,
EU, and U.S. Cambria Style and
 are registered trademarks in
Canada and U.S.

For media inquiries, please
contact Kathy Jalivay at
Kathy.Jalivay@CambriaUSA.com



CAMBRIA DESIGNS
IN THIS ISSUE

Berkshire Steel Sculpted™	Pg. 56
*Black Rock™	Pg. 53
Bridport™	Pg. 60
Brittanicca Warm™	Pg. 8
Brittanicca Gold Cool™	Pg. 27
Brittanicca Warm Matte™	Pg. 10, 62
*Chicago Tower Matte™	Pg. 54
Clare™	Pg. 32, 64
Colton™	Pg. 26, 28, 36–37, 39
Delgatie™	Pg. 6, 11, 18–21, 51
Devon™	Pg. 11
Ella™	Pg. 22, 25
Ella Matte™	Pg. 30, 64
Everleigh™	Pg. 16
Hailey™	Pg. 55
Harlow™	Pg. 24, 63
Hollinsbrook Matte™	Pg. 14
Inverness Frost Matte™	Pg. 59
Kendal™	Pg. 53
Lakedale™	Pg. 58
Mersey™	Pg. 13
*Minnesota Snow™	Pg. 42
*Montana Midnight™	Pg. 42
*Montana Midnight Matte™	Pg. 14
Oakleigh™	Cover, Pg. 4
Rose Bay Matte™	Pg. 15
*Salt Lake™	Pg. 12
Skara Brae™	Pg. 34
Torquay™	29
Trafalgar™	Pg. 52
*Vail Village™	Pg. 9
White Cliff Matte™	Pg. 10, 62

*Gensler product design consultant

Please call 1-866-CAMBRIA
(1-866-226-2742) to
confirm design availability.

Some individuals featured in
this issue of *Cambria Style* were
provided compensation and/or
complimentary product.

STYLE & DESIGN

TIPS FOR INSPIRED LIVING



SEE MORE OF
THIS KIPS BAY
DECORATOR
SHOW HOUSE
ON PAGES
14-15



Enriching every room with enticing color, texture, and bold personality.

STEPHEN KARLISCH

VAIL VILLAGE™*

*Gensler product design consultant

CAMBRIAUSA.COM/STYLE 9

No. 1

SIMPLE ELEGANCE

CHRISTOPHER PEACOCK has spent three decades perfecting his signature blend of timeless style and top-flight quality in cabinet and kitchen design. In the eponymous Christopher Peacock Cabinetry showroom in Boston, the designer combined his Hudson cabinet line with custom brass hardware and liberal helpings of Cambria—Brittanicca Warm Matte on the walls, White Cliff Matte on the counters—to sleek effect. “I wanted this space to reflect the Boston metro location, hence the simpler lines and more modern aesthetic,” he says.



THE COLORS AND UNDULATING MOVEMENT OF CAMBRIA BRITTANICCA WARM MATTE ENLIVEN THE KITCHEN WALLS WITHOUT OVERTAKING THE STREAMLINED STYLE.

BRITTANICCA WARM MATTE™
WHITE CLIFF MATTE™

NEIL LANDING PHOTOGRAPHY



No. 2



MOUNTAIN MODERN

When a Durango, Colorado, couple wanted a fresh look for their longtime home, they turned to Denver-based designer **GINA D'AMORE BAUERLE** to handle the update. "It's a timber-frame house, so the trick was creating a more modern look while working with the strong architecture," she says. Replacing the original black countertops with a mix of two light Cambria designs, Delgatie and Devon, immediately brightened the large kitchen and created durable prep-and-serve surfaces for entertaining their adult children, friends, and family. Transforming a breakfast nook into a bar—complete with a focal-point teal backsplash tiles—and adding a sliding glass door to link indoors and out completed the sophisticated transformation.

THE CAMBRIA DELGATIE-TOPPED ISLAND MAKES AN IMPACT, WITH A SIX-INCH DEEP EDGE, SUPER-SLEEK COOKTOP INSTALLATION, AND THE GLOW OF LED LIGHTING ALONG ITS PERIMETER.



TIM GORMLEY

No.3



BRIGHT OUTLOOK

It's not every day you see a kitchen with yellow cabinets, pink pendant lights, and a blue and white backsplash, but in this Canadian kitchen designed by **MARTIN DE SOUSA** of Toronto's Designström, the unexpected mix works. "After we made the layout more functional, the owners' personalities guided the design: the husband's Moroccan heritage influenced the choice of the clay tiles, and the wife has a very colorful style—the yellow cabinets were her idea," says de Sousa.



LIBERAL SPLASHES OF CALMING WHITE—CAMBRIA'S TERRAZZO-LOOK SALT LAKE DESIGN ON THE COUNTERS AND BENJAMIN MOORE'S SIMPLY WHITE ON THE UPPER CABINETS—HELP BALANCE THE VIBRANT HUES.



SALT LAKE™*
*Gensler product design consultant

No. 4

MELLOW DRAMA

Designer **TRACI CONNELL** incorporates Cambria's Mersey as a common element to marry a masculine and feminine vibe in this his and hers en suite bathroom. The luxury of the vanity's black and white design flows over the edge to show off the dramatic pattern. And in this "his" portion of the space, it's paired with custom scored and dark stained oak millwork and cabinetry and a vessel sink, all under the soft glow of burnished gold sconce lighting.



*THE BLACK AND WHITE OF CAMBRIA'S
MERSEY DESIGN IS SOPHISTICATED
ENOUGH TO SUIT BOTH FEMININE AND
MASCULINE STYLES, AND ITS DURABILITY
MAKE IT A NO-BRAINER FOR A BATHROOM.*

MICHAEL HUNTER



COMBINING THE BOLD PATTERN OF CAMBRIA'S HOLLINSBROOK DESIGN WITH SIMPLE MONTANA MIDNIGHT CREATES NATURAL FOCAL POINTS AND HELPS BREAK UP LARGE EXPANSES OF SURFACE.



No. 5

Lighting conceived with a modern iteration of Art Deco artistry adds a luminous sense of glamour.

PARTY READY

For the third annual Kips Bay Decorator Show House Dallas that benefits the Kips Bay Boys & Girls Clubs, designer **CHRISTOPHER PEACOCK** created an exquisitely appointed entertaining suite with a kitchen, butler's pantry, and food pantry. To help organize the main kitchen, he created a double-island design—one for food prep and one for gathering—both topped with Cambria. He gave his own Lambourne cabinet design a two-tone finish for a furniture-style look. And then he layered on the details—playful wallpaper, mosaic tile, sparkling chandeliers—for an effect that's as unexpected as it is irresistible.



HOLLINSBROOK MATTE™
MONTANA MIDNIGHT MATTE™*
*Gensler product design consultant

STEPHEN KARLISCH

CAMBRIA'S ROSE BAY DESIGN DOMINATES THIS LUXURIOUS SPACE, TRANSITIONING BEAUTIFULLY TO PENNY-ROUND TILES ON THE WALLS AND FLOOR.



ROSE BAY MATTE™



STATEMENT STYLE

Houston-based interior designer **LUCINDA LOYA** leaned into her favorite Cambria design, Rose Bay, to give the adjoining bathroom en suite she designed for the 2022 Kips Bay Decorator Show House Dallas an appropriately showstopping style. The entire vanity wall is clad with the material, and a collection of oval mirrors—cleverly turned on their sides—adds drama with their bold geometry to help visually expand the small space. Glimmering mosaic tile on both the floor and ceiling complete the jewel box effect.



TAKE A TOUR OF KIPS BAY DECORATOR SHOW HOUSE DALLAS, VISIT CambriaUSA.com/Style

No. 6

crafted

TEST YOUR METAL

When selecting hardware and lighting fixtures, mixing metal finishes elevates an overall kitchen design, adding elegance to functionality. Popular shades of gold and bronze complement most cabinet finishes and pair perfectly with today's showstopping luxury surfaces like Cambria's Everleigh design with its combination of cool gray and honey tones. "Be a little fearless in design," says Cecil Adams of Currey & Company.

BRIGHT IDEAS

Any interior design should incorporate a well-thought plan for lighting. Illuminate your mind with these expert tips.

Although it's easy to go too far in any one direction—keeping the lumens low to accentuate a fabulous chandelier above your dining table while leaving guests fumbling for their forks or flooding your kitchen with so much task lighting, no one notices the soft glow of the designer pendants above your island—don't be intimidated or overwhelmed by the options. Just keep the following expert lighting advice in mind whenever you're switching things up.

WANT
ADDITIONAL
LIGHTING
INSIGHT? MORE
ILLUMINATING
TIPS AWAIT AT
CAMBRIAUSA.COM
/STYLE.

HOW TO LIGHTEN UP

EMBRACE LED

LEDs use 75 percent less energy and last 25 times longer than traditional bulbs. And today's energy-efficient LED bulbs are more versatile than ever, producing ranges of illumination. This allows homeowners to tuck lighting away under shelving to show off a beautiful backsplash and provide more focused task lighting (as shown on page 10).

FIND BALANCE

If you want to highlight a statement chandelier, complement it with more functional lighting such as

wall sconces, recessed lighting, and strategically placed floor lamps to create layers of light. But don't go overboard and drown out a statement piece, especially in well-lit rooms like kitchens. Purposefully selected sconces add interest and function without distracting from oversize pendants or a focal point chandelier.

GROUP THINK

Keep sconces at the same level—aligned to highlight wall accents like art. But add interest to pendants by grouping them at different levels or choosing designs that stand out in terms of scale, finish, or color.



AVOID THESE TURN-OFFS

On your journey toward creating more nuanced lighting in your home, you may face potential pitfalls. And though there are exceptions to every rule, here are four things to probably NOT do along the way:

CHEAP OUT | It's a mistake to leave lighting till last, when you've already spent the bulk of your budget. Inexpensive lighting can cheapen the most elegant design. So make sure the taste level stays on par with other furnishings. Your fixtures should incorporate seamlessly into your overall design aesthetic.

GO HIGH | It's tempting to hang chandeliers high to avoid heads, but over dining tables, bring them as low as you can get without impacting sight lines. Try no more than three feet above—or 30 inches for a more intimate effect.

OVER LIGHT | Smartphone apps make it easy to measure light in degrees Kelvin. While you could tolerate up to 6500 Kelvins, don't exceed 4000K in spaces where you'll want to relax. For example, note the minimal visible light fixtures in the cozy living room on page 22.

SWAP STYLES | Lighting designers put effort into sourcing bulbs specific for their fixtures. If you can't find exact replacements, seek out bulbs that adhere to the recommended maximum wattage and honor the initial design. For example, don't alter the effect of a clear glass shade by using an unsightly bulb.

GLOW UP

Jackson Schwartz reminds anyone opting for a handblown fixture—like those created by his company Hennepin Made—that thickness and opacity varies from piece to piece. “That can bend the light or refract the light differently,” Schwartz says, “which creates a lot of nuance in every single piece.”

DESIGNED FOR WELLNESS

Sleek, modern lines and a mix of materials chosen for their calming style, easy maintenance, and sustainability create a space that enhances the well-being of its inhabitants.

DELCATIE™



DELGATIE™

**CLEAN LINES AND RICH MATERIALS—
WALNUT CABINETRY, OAK FLOORS, AND
CAMBRIA'S DELGATIE ON THE COUNTERS,
WALLS, SHELVES, AND RANGE HOOD—
CREATE A SOOTHING SPACE.**

By **DIANE CONRAD** | Photography by **AMY BARTLAM**

Planning the kitchen of a showcase home with a wellness theme was right up Laura Muller's alley. The principal of Los Angeles-based Four Point Design Build makes her clients' wellness the foundation of every project. "We all need spaces that make us feel good physically, emotionally, mentally," she says. "In this kitchen we worked very hard to tick all those boxes through design."

Job number one was creating a layout that made the most of this kitchen's fairly compact footprint. That involved stealing some space from an adjoining garage and moving a wall—but perhaps even more important were the cabinet choices. You'll notice there are no upper cabinets, a decision that might seem counterintuitive given the limited square footage, but one that was absolutely intentional.

"It can be hard to even imagine a kitchen without upper cabinets, but eliminating them creates clear sight lines across the room, for a more open experience that's very soothing," says Muller. "And people of all heights and mobility can usually access drawers and lower cabinets more easily." To ensure plenty of stowaway space, the designer lined an entire wall with floor-to-ceiling pantry cabinets and packed more storage into the island and perimeter base cabinets.

Next, Muller outfitted the space with materials chosen with a number of criteria in mind. Of course, they had to be beautiful. They also had to be easy to clean and super durable, attributes the designer believes help remove day-to-day stress and long-term anxiety. She says, "If you're not worrying about keeping something clean, or about keeping your kids or pets from destroying something, you can relax



STRATEGIC DESIGN

Waterfall edges on the island look modern and dramatic but also offer peace of mind for homeowners, standing up to wear and tear better than a wood surface.

✓ STORAGE AND STYLE

Deep banks of drawers lend plenty of under-counter storage. Cambria Delgatie extends from the counters to the walls and even the shelving, for a sleek, seamless look.





DELGATIE™



(MULTI)FUNCTION FIRST

A small desk is just the right size for a laptop—a convenience for busy, professional, multigenerational families.



SEE MORE APPLICATION OPTIONS AT [CambriaUSA.com /Application-Inspiration](https://CambriaUSA.com/Application-Inspiration)

and enjoy your life a lot more—and that’s one of the keys to wellness.” The final wellness ingredient was a commitment to sustainability, wherever possible choosing products with recycled material and always selecting products manufactured with responsible practices, making Cambria’s Delgatie, Cleaf walnut cabinets, and Lauzon Canadian oak flooring thoughtful, functional, and beautiful choices.

Muller’s attention extended to details users might not even notice, at least not consciously. All selected materials have matte finishes that are smooth to the touch, a soothing accommodation for people with high-touch sensitivity. There are no pendant lights over the island, allowing for easy sightlines for people of all heights. (According to the designer, tall people often end up looking right into a bare bulb, or having their view blocked by a fixture.) The aisles between the island and perimeter elements are wide, to allow

LAYERING IN A NEUTRAL SPACE

Look for complementary colors in variations of intensity when layering finishes, woods, textures, and textiles in a neutral space.



PAINT PICKS > From left: White Dove OC-17, Seapearl OC-19, Edgecomb Gray HC-173 all from Benjamin Moore.



for better traffic flow and to accommodate wheelchair access. Even the cooktop was chosen with special care: an induction model that offers fast performance but stays cool to the touch, except when cookware is in place during use, making it safer than regular electric or gas models.

At every turn Muller also created special, delightful “moments,” because she believes happiness is a very important element of wellness. A built-in pizza oven is a foodie’s dream, and also a great way to create family closeness with a shared activity; a floating shelf fabricated from Cambria Delgatie displays favorite accents; in the butler’s pantry, a coffee station and wine fridge make relaxation rituals easy. The overall result is a space that looks like a contemporary luxury kitchen—and it is—but it’s also one that works behind the scenes to support the health and well-being of those who enjoy its amenities.

RENEWED WITH CHARACTER

A once-dated Minnesota home has an energetic new look, thanks to rich architectural details and a bold color palette.

ELLA™



GUTSY COLOR COMBINATIONS AND A MIX OF MATERIALS SET AGAINST A NEUTRAL, BUT RICHLY DETAILED BACKDROP, CREATE A NEW LOOK THAT'S FRESH BUT NOT TOO TRENDY.

By **DIANE CONRAD** | Photography by **CHELSIE LOPEZ**

DESIGN FLEXIBILITY

The bar top features a removable slab of Cambria's Ella that the owners can use to create an impromptu serving surface wherever they need one.

It's not easy to transform worn interiors without an expensive gut renovation, but that's exactly what designer Morgan Molitor achieved in this south-metro Minnesota project. "The house had a real 1990s style, with all the golden oak," says Molitor, who runs the Minneapolis-based design-build firm construction2style with her husband, co-founder and contractor Jamie Molitor. "It really needed a fresh approach, but we had to be very smart and targeted about where we spent and where we saved."

The team began by crafting a clean, contemporary shell for the public main-floor spaces: the entry, dining room, and living room (or "adult lounge," as Molitor calls it). Adding custom millwork—board and batten paneling on select walls; new baseboards throughout—and new

hardwood floors did the trick, allowing the designer to then add layers of personality and interest with bold paint colors and an inviting mix of materials.

In the lounge, for example, she went with black paint for the walls, a dramatic choice that makes the bay window and new built-in bookcases and bar (topped with Cambria's Ella) stand out. A boldly patterned rug centers the cozy seating area along with a plush fabric-upholstered sofa and a pair of slouchy leather chairs. In the dining room, Molitor brought in a hint of glam with an unexpected mix of gold-metallic and pink-velvet upholstered chairs, plus a sculptural, geometric chandelier.

It was in the kitchen that the design-build team really had to get creative, thinking beyond a typical total





SMART UPDATES

New floors, Cambria Harlow countertops, and handmade backsplash tiles—plus a strategic island paint job—give this existing kitchen a fresh new look without a total redo.



MAKING A STIR

The addition of built-in cabinetry with a cocktail and beverage station topped by the elegance of Cambria's Ella design instantly indicates a grown-up space in this family home.



ELLA™

renovation. “The cabinets were in good shape and the layout was fine, so it seemed wasteful to rip out and start over,” says Molitor. Instead, she figured out a way to work with the existing elements. Replacing the old countertops with Cambria’s Harlow made a huge impact, brightening the room with a cohesive, modern look. Molitor painted the island base black and replaced the over-the-range microwave with a new custom range hood, also black. Finishing touches—glazed terra-cotta backsplash tiles, a new sink and faucet, eye-catching pendant lights over the island—with a clean, contemporary style completed the transformation.

The effect of the update throughout the house is dramatic, and the homeowners—and their neighbors—love it. “The client says people keep coming over to get ideas for their own makeovers!” says Molitor.

HIGH CONTRAST CREATES DEPTH

Dynamic colors underscore self-expression. Try on the trend by incorporating contrasting neutrals.



PAINT PICKS > From left: Steam AF-15, Balboa Mist OC-27, Cheating Heart 1617 all from Benjamin Moore & Co.

INSPIRED BY NATURE

A sensitive renovation gives a young family's home a more practical layout and a smart, sustainable new design.

COLTON™



BRITTANICCA GOLD COOL™

*RICH NATURAL TEXTURES OF
STONE, WOOD, METAL, AND
LEATHER STAND OUT AGAINST
A BACKDROP OF CRISP
BLACK AND WHITE.*

By **DIANE CONRAD** | Photography by **COURTNEY AND CHRIS HARTFORD**

It's a conundrum many families have faced: a house that's in the right location and is the right size ... but still somehow doesn't feel like home. "These clients came to me because their house wasn't serving their needs—but they could see its potential," says designer Kathryn Pilon of Chatham, Ontario-based Index Design Studio. "We spent a lot of time talking about their life and how they currently lived in their home and how they wanted to live in it. And then we took the whole main level down to the studs and started from scratch."

The renovation had two important goals, and one major limitation: The clients—parents of three young children—wanted a more effective main-floor layout with comfortable and practical living, entertaining, and working spaces, and a lighter and brighter look,

but they needed to complete the update without changing any exterior doors or windows.

So Pilon worked within the existing structure, removing a long dividing wall down the center of the home and vaulting the ceilings to create an open and airy shell for the new floor plan. Pilon then split the existing living room—a very large, long room—with a two-sided fireplace, creating a multipurpose nook on one end that flows into the kitchen. The kitchen got a redesign, too, with a new center island with seating for six. Finally, the designer upgraded the existing laundry and powder rooms, swapping their locations to enlarge the laundry room and give it a new window.

With the layout in place, Pilon set about creating a look and feel that fit the family's outdoorsy vibe.



MADE FOR GATHERING

A new double-sided fireplace creates a cozy nook just off the kitchen, a perfect place to curl up with a book or come together for study or a board game.



COLTON™

➤
**MIXED
MATERIALS**

In the kitchen, a white palette is warmed up by a mix of wood tones, metallic accents, and the subtle variations of handmade clay tiles on the backsplash.

“The motto for this whole project was ‘inspired by nature,’” she says. “The clients had recently redone their landscaping and love spending time outdoors, and they wanted to bring that natural feeling inside. They were also very intent on choosing sustainable, North American-made products throughout. These priorities guided everything we did.”

Those natural influences shine through in every revamped room. In the kitchen, walnut-stained beams lend warmth to the soaring ceiling, echoed underfoot by new oak floors and by floating wood shelves at eye level. The large center island pairs a crisp white Cambria Colton countertop with a deeply stained base, introducing a third wood tone,

“without being too matchy-matchy,” says Pilon. On the backsplash, handmade clay tiles introduce varied texture and a bright, reflective surface. Oversize black pendant lights lend drama above the island.

Flowing from the kitchen is the new seating nook, grounded by a double-sided fireplace of locally sourced stone and brightened by a cozy window seat. It’s a flexible, multipurpose room of the type often included in new construction plans, but harder to come by in older homes. “A flex room is a great feature for almost any home,” Pilon says. “And it was really important for this family. They regularly host small groups, and this new space gives them another area—besides the living room, dining room, and kitchen island—where



TORQUAY™



PRETTY AND PRACTICAL

A new window floods the laundry room with light. Conveniences include a drying rod for hanging hand-washables and Cambria's Torquay on the counters.

people can gather. And it's perfect for the kids to do homework, or crafts, or play games."

Another smart and practical feature for this busy young family: the upgraded laundry room. Pre-renovation, the laundry room was small and windowless, woefully inadequate for a busy family of five. Swapping its position with the existing powder room let Pilon create a combination laundry/mudroom with plenty of light, storage, folding surface—courtesy of Cambria's Torquay design—and even a sink.

This reimagined home now fits its family's lifestyle to a T—and it also fits their commitment to sustainability and healthy living. Well beyond

having a "natural" look in the interiors, the homeowners wanted their home to be an example of good stewardship of the natural world. "It was so important to the clients to choose materials that they felt good about," says Pilon. "That's why they chose Cambria countertops, for example. They wanted a health-conscious, non-toxic, and long-lasting material—and they loved Cambria's commitment to responsible resource management."

Easy to live in, easy to share, and easy on the planet—this renovation delivered on all the homeowners' dreams. And its natural beauty is easy to admire, too.

BLEND FINISHES & TEXTURES

Incorporate contrasting elements from smooth and architectural to plush and vintage-inspired to create an environment that is both sophisticated and relaxed.



CASUAL ELEGANCE

"The matte finish and subtle veining of Cambria's Ella was the perfect complement to everything else in the kitchen," says designer Syrina Gatta.



SEE MORE CAMBRIA
MATTE DESIGNS
CambriaUSA.com/Edges



WEEKEND RETREAT

When it comes to relaxing in style, this luxury getaway in Ontario's wine region has it all.

By **THOMAS CONNORS**

Photography by **YOUNG GLASS PHOTOGRAPHY**

For folks in Ontario, Canada, “going to the cottage” is a cherished tradition. And if that getaway is on the water or anywhere near it, all the better. Situated on Lake Ontario less than 100 miles from Toronto, Niagara-on-the-Lake is a popular second home spot where many weary city dwellers go to refresh and relax in sophisticated retreats fashioned by luxury home builders like Gatta Homes.

As this upscale bungalow makes clear, the Gatta approach combines a crisp, contemporary aesthetic with an eye for room-warming touches. “I like to play with architecture and texture, such as in the fluted detail on the kitchen island,” shares lead designer, Syrina Gatta. And she never lets a space go to waste. In the primary bedroom, she inserted a built-in dressing table across from the walk-in closet.

With high ceilings, amply scaled rooms, and fine finishes throughout, this weekend home is a far cry from the rustic cottages of old. But with the lake lapping not far away, you know just where you are.

“

GOLD AND BRASS MIXED WITH
MODERN BLACK ELEMENTS BRING
THE HOME'S FRENCH EXTERIOR
INSIDE BUT IN A LESS ORNATE WAY.

CLARE™



↶ MAKING AN ENTRANCE

A collaboration with Artcraft Kitchens, the pantry features plenty of storage, including maple and brass bistro-style shelves (left). This deeply recessed doorway leads to the den, which offers secondary access to a powder room on the main floor (above).



DETAIL ORIENTED ↗

This bedroom is furnished with pieces from CB2 and oxidized gold lighting fixtures from Matteo Lighting (above right). An archway at the top of the stairs is filled with Mosaico Nantes Caliza tile from Porcelanosa. The delicate stair rail is made of white oak and solid brass (right).





“

PEOPLE WANT MORE IN A BEDROOM THESE DAYS, SO UTILIZING A NOOK CREATES A USEFUL DESK OR MAKEUP AREA.



COMFORT ZONE

Simple and serene, the powder room is anchored by a custom sink created with Cambria's bold Skara Brae design (left). The ash-lined dressing table in the primary bedroom is an inventive use of space (above). A concrete tub in the primary bathroom—pure decadence (right).



FIND TIPS FOR TRAVELING TO NIAGARA-ON-THE-LAKE AT CambriaUSA.com/Style




PAINT PICKS > From left: White Down OC-131, Stone Brown 2112-30, Onyx 2133-10, all from Benjamin Moore.

POLISHED PERFORMANCE

Warm and creamy Cambria Colton countertops paired with smooth enameled cabinets and gold hardware create a kitchen that works hard while looking glamorous.



COLTON™



By CAROL LINN
Photography by GEORGE HOLZ

N REAL LIFE

Sara Foster wears more professional hats at once than many people do in a lifetime: producer, investor, social media influencer, company owner. But the identity her sunny west L.A. home proclaims most loudly is “happy mom.” Family photos of Foster, her husband—tennis pro Tommy Haas, and their daughters Valentina, 12, and Josephine, 7, are everywhere. Bookshelves flank a bedroom-adjacent sofa made just for reading and cuddling. A spacious kitchen with Cambria counters is the prep site for nightly family dinners.



FAVORITE DAUGHTER

WITH
CAMBRIA,
I'VE BEEN
ABLE TO DO
VIRTUALLY
ANYTHING
AND MY
COUNTERS
STILL LOOK
BRAND NEW.

Foster and Haas bought the house before their daughters were born, and it was, she says, “the first place we put down roots.” Those roots have proven long-lasting. The house is lovely but unpretentious, and Foster says she sometimes longs for more room and a yard big enough for a pool and a dog. “But every time we talk about moving, the kids cry ‘I’ll miss my bedroom!’” So not quite two years ago, she opted to bring light to its dark, dated kitchen. New paint and hardware helped, but installing Cambria Colton on the counters and backsplash, a rich cream inscribed with gold and charcoal, really transformed the space. “I walk in now and feel ... zen,” she marvels. “The brightness actually changes my mood.”

Cambria, also used on the family room fireplace surround, was a natural choice. Foster’s father, music industry legend David Foster, is a longtime friend of Cambria President and CEO Marty Davis, a relationship that Foster enjoys as well. “I love Marty because he’s such a family guy!” she says. “Even though his kids are older, they’re still his world.” She also values a product that’s made in America—particularly since she herself became a business owner and knows that option isn’t



Sara Foster and her sister, Erin, are daughters of renowned music producer David Foster, who once graced the cover of *Cambria Style*. Since then, the sisters have carved out their own niche in the entertainment industry as writers,

podcast hosts, and social media mavens. Recently, they’ve added fashion brand co-founders to their list of accomplishments with Favorite Daughter. The Favorite Daughter brand includes high-quality and well-fitting basics made for the

“girl on the go.” The duo describes Favorite Daughter’s classic staples as items they’d want to have in their own closet or what many women might want to steal from their own sister’s closet.



always easy. “I have so much respect for someone who’s figured out how to make it work.”

Best of all is Cambria’s durability. “A lot of cooking” happens in their kitchen, she says, and “my old counters, which were marble, were *thrashed*. We air-fried a turkey one Thanksgiving, and it left a burn on the marble. I put lemon in my water every morning, and the lemon juice stains marble. With Cambria, I’ve been able to do virtually anything and my counters still look brand new.”

Nothing about Foster’s immersion into domestic life was predictable. Her father and mother (actress Rebecca Dyer), divorced when she was five and life afterward was non-nuclear in the extreme. “I grew up with two homes, other marriages, stepchildren, and a lot of people coming and going,” she says, adding bluntly, “I got comfortable really early taking care of myself. Now the way I approach parenthood and family is to work really hard to keep the unit thriving and loving. To keep it together at all costs.”

The range of her career success was another surprise. She acted and modeled through her 20s, but it wasn’t until she was over 30, she says, that “I came into my own.” That was when she and her younger sister Erin, a TV writer, took a leap of faith and created a cable TV show for themselves. “We were both in careers where we had to wait to be chosen,” says Foster. “We wanted to take back the power.”

After *Barely Famous*, which ran two seasons and parodied celebrity, the glitzy entertainment world, and themselves, a lot of doors opened. Today, the Foster sisters’ empire includes the tongue-in-cheek podcast titled the “World’s First Podcast,” a venture capital fund, and a successful clothing line, “Favorite Daughter,” which is sold online and at a variety of stores, including two of its own in the L.A. area. Its classic-casual pieces are aimed, as Foster puts it, “at the woman who wants to feel chic but who isn’t going to spend a fortune on a pair of pants.”

Of all her successes, becoming a fashionista was the most unlikely. “Erin and I run in real fashion circles, with women who spend a lot of money on designer clothes, but that’s not us,” she says. But when the global apparel company Centric

Brands suggested it might be fun to put some of the sisters’ “hilarious” social media captions on T-shirts, her instinct was *why not?* The shirt emblazoned with “Favorite Daughter,” a poke at sibling rivalry, “sold out like crazy. And we thought ‘this has legs.’” The venture is a partnership, which means the details of manufacturing and supply chains are left up to “actual professionals who know what they’re doing,” says Foster. “But not even a T-shirt gets made without us touching, feeling, and wearing it.”


Foster has always been savvy about brand building. “You need more than a great product, you need a story,” she says.

Her own brand has always been that of a woman who’s somehow both spectacularly good looking and accessible. Maybe it works because it seems genuine. The podcast she and Erin produce sounds very much like girlfriends talking: “You quit your job?” they breathlessly ask one very accomplished guest. “Was it scary?” An Instagram photo of Foster in evening wear is captioned, “How quickly the glamour of the night fades when you come home to a dirty kitchen and kids who are still awake.” Ask her how she manages to balance her professional and domestic responsibilities, and she sighs.

“In the real world, women work 9 to 5 then go to a night job. Teachers deliver food for DoorDash. I

have a nanny and a mother who lives 15 minutes away, the most hands-on grandma you can imagine. Whenever I hear celebrities talk about how hard their lives are, I think ‘please shut up!’” She aims to bring that same sensibility to the clothing line that fills her own walk-in closet. “We want to be sitting at a table where everyone feels comfortable. We want to have inclusive sizing. We want everyone to be able to see themselves wearing Favorite Daughter.”

Accessibility goes double for her life as a mom. “You have to be *present*. I work all day, so I’m home most nights. It’s important to me that I put my daughters to bed and that I’m there every morning to get them ready for school. That’s time you never get back.”

“Maybe I’m overcompensating, but I want them to know they can lean on me forever,” she says happily. “I’m going to be parenting my kids until the day I die.” 

THE WAY I APPROACH PARENTHOOD AND FAMILY IS TO WORK REALLY HARD TO KEEP THE UNIT THRIVING AND LOVING.

NATURAL GLAMOUR

Designer Sasha Bikoff in her garage with a dramatic black-and-white Cambria-tiled floor, located on a bluff in East Hampton's the Springs, which overlooks Gardiner's Bay.



MONTANA MIDNIGHT™*
MINNESOTA SNOW™*

*Gensler product design consultant



GOING OFF SCRIPT

*AT HER EAST HAMPTON HOME,
MAXIMALIST DESIGNER
SASHA BIKOFF HAS A CLOSE
BRUSH WITH MINIMALISM.*

By JORGE S. ARANGO
Photography by WILLIAM WALDRON

“I

'm a Gemini,” declares designer Sasha Bikoff. “I live my life in a duality.”

As evidence, she cites the polarity between her Greenwich Village apartment in Manhattan and her East Hampton getaway in the enclave of the Springs. “In the city I live in a landmarked townhouse with a very English turn-of-the-century kind of style, like a cabinet of curiosities sort of vibe,” she explains. This interior—awash in pink and chock-full of eccentricities (an ornately painted carousel horse, Campana Brothers Zig Zag chairs, butterfly wallpaper)—hews more closely to the outré style that has distinguished her career.



↑ WOOD WORLD

French white oak warms the pantry (top) and frames a glass pivot door next to the kitchen (above) that leads to the verdant garden.

← TASTING MENU

The dining room's eclectic mix includes antique New England boarding school chairs around a custom table inspired by Royère under a Verner Panton pendant lamp.

*IN THE HAMPTONS, I'M MY
NATURE GIRL ALTER EGO ... IT'S A
BOHEMIAN LIFESTYLE.*

”





SOFT TOUCH ↑

A guest room swathed in Bikoff's "Uptown Toile" fabric and wall covering for Fabricut.

BATHING BEAUTIES →

Poolside custom chaises and an Indonesian bed (top). A bespoke marble tub (right) off the primary suite—"part of the 'Aman Sasha' situation," says Bikoff.





✓ SURF'S UP

A grass cloth–wrapped guest room (left) boasts a Versace surfboard bed and linens. Bikoff's 16th-century Dutch map mosaic-covered tub (below) in the primary bedroom.




"But in the Hamptons, I'm my nature girl alter ego," she continues. "There I'm paddleboarding, fishing, swimming. I always have sand on my feet and a wet bathing suit on. It's a bohemian lifestyle where I get down and dirty." To that end, Bikoff asked architects Michael Foley and Cassandra Perez of Plot-1 to design a pair of modern barn-like structures with high-pitched roofs (the reference for the latter were the region's old stone churches) connected by a large deck.

The resulting architectural envelope of "simple but dynamic materials" such as white oak and Japanese plaster stopped her maximalist impulses in their tracks. "I wanted to challenge myself by practicing restraint," she says. "I didn't want to detract from those materials." Instead, she set out to create what her friends call "Aman Sasha," after the famously serene hotels.

Of course, she did allow herself what she calls "my 'boop' moments," flashes of color or eccentricity here and there. These include a bathtub actually *in* her bedroom covered in a mosaic reproduction of a 16th-century Dutch map (part of her collection for New Ravenna); an Indonesian bed by the pool; a guest room bed with a surfboard headboard from her collaboration with Versace (and a taxidermy sailfish she caught herself on the wall); cast resin horseshoe crab sconces, and a 1960s Roger Capron tile-topped table in the all-white living room.

But while her "boop" moments add pop and glamour, they are calibrated within a larger context of the nature-loving narrative she is telegraphing. Take her 1975 canary yellow 450 SL Mercedes. "I consider it a piece of art," observes Bikoff. "I've had it since college, and



*I WANTED TO CHALLENGE
MYSELF BY PRACTICING
RESTRAINT. I DIDN'T WANT TO
DETRACT FROM THE SIMPLE,
DYNAMIC MATERIALS.*



WHITE NIGHT

Bikoff's bedroom was inspired by the white plaster houses of Greece with their monolithic built-in forms.


FEELING BLUE ↓

A bath that serves two guest rooms was completely tiled in Bikoff's indigo-colored "Bandana" pattern for New Ravenna.



I wanted a great space for it. But that space had to be multifunctional too." So, Plot-1 created a two-story structure, the ground floor of which boasts a checkerboard floor made of Cambria Minnesota Snow and Montana Midnight tiles.

"It's always been my dream to have a black-and-white diamond-patterned floor," she says. "It feels very classic American. It's dramatic but doesn't detract from the natural ambiance of the house because it feels appropriate to the time when houses and churches in this area would have been built." True to her aim, she can roll the Mercedes out and hold a party in the "barn" (served by a lemon-meringue yellow kitchenette in the upstairs guest suite). She has also had yoga classes there and used it as a painting studio.

"As a designer, I'm continually trying to challenge myself and create new ideas from my old ones," Bikoff says. "Normally I'd create a narrative and just keep adding layers. Here I knew that rabbit hole would be dangerous." 



CURVES AHEAD

Bikoff collaborated with St. Charles Kitchens on the guest suite's lemon-colored kitchen. A round window was at the top of her wish list for the house.



SEE MORE HOME
TOURS AT
CambriaUSA.com/Style



C A M B R I A[®]

© 2023 CAMBRIA || 1129526_AD

DRAMATIC BY DESIGN

Be iconic with Cambria
quartz surfaces.

BECKINGTON™



**FAMILY OWNED
AMERICAN MADE**

PURSUIT

IDEAS AND ENDEAVORS FOR THE SEASONED CONNOISSEUR



WHITE PEACH
FROSÉ AND MORE
MOCKTAIL RECIPES
ON PAGE 61.

From sea to shore, experience unique takes on traditional fare.

CATCHES OF THE DAY

VISIT AMERICAN RESTAURANTS SERVING THE FRESHEST FRUITS OF THE SEA, THEN TRY TAKING YOUR SHELLFISH GAME HOME.



By PAUL HAGEN

Flex Mussels NEW YORK, NY

With its dense blocks of soaring buildings, Manhattan can make it easy to forget that when you're there, you're rarely far from the water. In-demand interior designer Sasha Bikoff reminds visitors to Flex Mussels restaurant (flexmussels.com) with nautical touches including whale tail door handles, a shell-like reception stand, and surfaces in Cambria Trafalgar—a seafoam- and sand-colored design reminiscent of the shoreline. But these are grace notes in a cosmopolitan design that ideally complements NYC's chic Upper East Side, where restaurant co-owner Bobby Shapiro and his staff ensure guests are welcomed with enthusiasm and insight into the flavor-filled menu. They might recommend craveable opening dishes such as an aguachile that infuses light fluke with the zing of citrus and jalapeño, or whipped ricotta on sourdough with a mouthwatering caramelized onion marmalade. You'll definitely want their expert input when choosing from among eight amazing mussel preparations. Options include Thai with coconut curry and lemongrass, Parma in a creamy parmesan broth, and Fungi with wild mushrooms and double smoked bacon. You could also consult oyster sommelier "Shucker Paddy" McMurray, who can explain the varieties on offer and suggest cocktail pairings when he's not offering special experiences like Shucking 101. Plus, don't miss their latest flex—making enjoying caviar more accessible and ethical.

TRAFALGAR™

LESLEY UNRUH



CAVIAR DREAMS
ENJOY CAVIAR
AT HOME WITH
SOME ELEVATED
SALTY SNACK
RECIPES FOUND AT
CAMBRIAUSA.COM/STYLE/CAVIAR



MORE FRESH U.S. CATCHES

COUPES | DALLAS, TX

Incorporating the traditions of an elegant champagne bar with tantalizing small plates like devilled eggs and caviar or tuna tartare with tater tots, this space encourages raising a glass to celebrate any occasion.
coupesdallas.com

SUGARFISH | LOS ANGELES, CA

Choose their "Trust Me" option for a parade of sashimi, sushi, and hand rolls that bring its owners' over 50 years of experience serving the freshest fish in Japan to this side of the Pacific.
sugarfishsushi.com

167 RAW OYSTER BAR | CHARLESTON, SC

Channeling the spirit of a New England style oyster bar, 167 Raw showcases the fruits of the Atlantic from Canada to the local waters of Charleston. Bring friends to tackle the "Big Boy," an ample selection of oysters, clams, and shrimp. 167raw.com

THE WALRUS AND THE CARPENTER | SEATTLE, WA

Offering décor as playful as the Lewis Carroll poem from which it's named, this Pacific Northwest spot changes its menu daily, so keep an eye out for preparations like Hama Hama clams with cabbage cream, leeks, and aged balsamic.
thewalrusbar.com

A DEEPER DIVE

Want to continue your shellfish explorations at home? Keep these tips in mind when purchasing, preparing, and sharing fresh shellfish.

- Discard any with shells that are cracked or broken. Problems outside spell trouble inside.
- Live clams, oysters, and mussels should close when tapped. No response? Do not purchase.
- Live shrimp and lobsters should exhibit leg movement. If they're not still kicking, you should keep moving.
- Keep it cool—store raw seafood in a refrigerator set below 40°F (or wrap tightly and freeze).
- Are they done? The flesh of cooked crab, lobster, shrimp, and scallops should become firm and opaque. Clam, mussel, and oyster shells should open during cooking; throw out those that don't.
- Follow your nose. Any seafood that has a sour, rancid, or fishy smell, or a scent that reminds you of ammonia should not be eaten.
- Serving? Keep cold seafood dishes on ice while on offer, and don't leave it out for more than two hours. That ticking clock shrinks to just one hour if the ambient temperature is over 90°F.
- Pregnant women are at greater risk for foodborne illness and should avoid raw or undercooked shellfish altogether.

UNIQUE
FRANKFURTER
FLAVOR
COMBINATIONS

fusion-inspired
CLASSICS



Photography by STEVE HENKE
Styling by LARA MIKLASEVICS

SUMMER SLAW WITH
PEACHES AND PARSLEY

eat



MIXED FRUIT
GALETTE

Enliven simple favorites, like all-American hot dogs, with colorful and flavorful toppings and sides.

RECIPES

THE WISH WE WERE IN MEXICO HOT DOG

Top with grilled corn, cotija cheese, cilantro, and mayo.

AN ITALIAN-AMERICAN HOT DOG

Top with grilled onions and bell peppers, ketchup, and pepperoncinis.

A BANH-MI-INSPIRED HOT DOG

Add a little Sriracha mayo, jalapeño, pickled carrots, and cilantro.

A GOOD OLD CHICAGO-STYLE DOG

A beloved throwback with pickled peppers, diced tomatoes, yellow mustard, and chopped onions.

SUMMER SLAW WITH PEACHES AND PARSLEY

Adapted from withfoodandlove.com

INGREDIENTS

- 4 cups red cabbage shredded
- ½ cup fresh parsley, minced
- ½ cup raw sunflower seeds
- 2 Tbsp. olive oil
- 2 Tbsp. apple cider vinegar
- ½ tsp. fine sea salt
- ¼ tsp. black pepper
- 1 peach, thinly sliced

DIRECTIONS

Combine cabbage, parsley, and sunflower seeds in a mixing bowl and toss to combine. In another small mixing bowl, whisk together the olive oil, apple cider vinegar, salt, and pepper until the salt is dissolved. Pour the vinaigrette over the cabbage mixture and toss to combine well. Then add in the peaches and gently toss once more to combine altogether.

MIXED FRUIT GALETTE

Adapted from cooking.nytimes.com

INGREDIENTS

- 1 premade dessert galette pastry
- 8 oz. (about 1½ cups) mixed berries or berries and cherries
- 1 lb. apricots, pitted and quartered or sliced
- ½ tsp. almond extract
- 2 Tbsp. honey
- ¼ cup almond powder
- 2 Tbsp. apricot jam
- 1 Tbsp. raw brown sugar
- ¼ tsp. cinnamon
- 1 egg beaten with 1 tsp. milk, for egg wash

DIRECTIONS

Remove premade pastry from the freezer and place it on a baking sheet lined with parchment. Leave it to thaw while you prepare the fruit, but don't keep it out of the freezer for

too long. You want it just soft enough that you can manipulate it. Combine the berries, apricots, almond extract, and honey in a large bowl and gently toss together. Sprinkle almond powder over the pastry, leaving a 2- to 3-inch border all around and top with apricot jam. Place the fruit on top of the jam. Fold the edges of the dough in over the fruit, pleating the edges as you work your way around to form a free-form tart that is roughly 9 inches in diameter. Place in the freezer on the baking sheet for 45 minutes to an hour.

Meanwhile, preheat oven to 350 degrees. Remove the galette from the freezer. Brush the pastry with the egg wash. Combine the sugar and cinnamon and sprinkle over the fruit and the crust. Place in the oven and bake for 1 hour until the fruit is bubbly and the juice is running out and caramelizing on the parchment. Remove from the oven and cool at least 15 minutes. Serve hot or warm.



DISCOVER MORE RECIPES, INCLUDING HOW TO MAKE A FLAKY PASTRY DOUGH, AT

CambriaUSA.com/Style/Eat



GET FIZZY WITH IT

Pass on predictable canned sodas and serve up creative mocktails or select premade NA (non-alcoholic) options—a great way to have fun with a booze-free twist on sips.

SEEDLIP NON-ALCOHOLIC SPIRITS

Look for brands like Seedlip that use all-natural ingredients to help you create sophisticated non-alcoholic craft cocktails.

FAUXMOSA

Brunch doesn't need to be boozy to feel fancy.

SURELY NON-ALCOHOLIC WINE

When wine lovers prefer an NA option, steer clear of serving plain grape juice and instead select award-winning NA wine varieties.

PAIR LIKE A PRO

LESLEE MILLER, CERTIFIED SOMMELIER OF AMUSÉE, SERVES INSPIRED PAIRINGS FOR THIS CUISINE.

GOURMET FRANKFURTERS

Any way you shake it, a deliciously frothy dry pink is just the answer for any one of our gorgeously crafted dogs! And I'm sending you right in to the Italian section with this dry Lambrusco. Made of grasparossa and pinot noir and hailing from the oldest Lambrusco house in Italy, *Cleto Chiarli's fresh, strawberry, cherry, and raspberry-lifted sparkling pink* will pair nicely alongside bright spice. Yet it also cuts through rich proteins like these scrumptious dogs!

SUMMER SLAW WITH PEACHES AND PARSLEY

A wine that brings me directly to peach paradise and the perfect accompaniment to this summery slaw is *Marisco Vineyards' 'The Ned' pinot gris* from Marlborough, New Zealand. Delightfully aromatic and featuring bright florals and ripe aromas of white peach and honeydew with hints of baking spice, this yummy delicious white wine is a gem.

MIXED FRUIT GALETTE

Galettes with rosé just seems appropriate—am I right? Pair up your galettes with the *Domaine MasLauris' 'Les Terres de MasLauris' Cinsault + Grenache rosé*. This selection is elegant with hints of exotic fruit and berries. It's balanced with wonderful acidity and the finish is luscious and expressive. I'm excited for you to try these two together!

drink

ELDERFLOWER
BLUEBERRY LIME
MOCKTAIL



ZERO PROOF

THE POPULARITY OF LIGHTER, HEALTHIER MOCKTAIL OPTIONS
CAN HELP YOU LIVE IT UP WITH BOOZE-FREE LIBATIONS.

By **ANGELA JOHNSON**
Photography by **STEVE HENKE**

A growing awareness of the health benefits of consuming less alcohol has fueled a trend toward more sober sipping. Even if you don't ever drink to excess, imbibing a little less can increase energy levels and improve physical and mental health.

Meeting the demand of a sober-curious culture is a fast-growing market of great-tasting non-alcoholic (NA) options, which is great since you'll still want your summer soirees to include delicious drinks. If you're a newbie on the zero proof scene, be sure to shop for NA options that include much of what you love in a spirited drink. Balance is key. Seek a blend of acidity, sweet, and sour.

Keep in mind, part of the experience, that sense of indulgence and luxury, are often what make a glass of wine or a cocktail seem special. The indulgence (minus the buzz) can be replicated by taking the time to create a terrific mocktail with high-quality ingredients, served in a fancy glass, and embellished with winsome garnish.



drink

SPARKLING
PEACH & THYME
MOCKTAIL

IN THE SPIRIT

CUCUMBER BASIL SPARKLING LEMONADE



NOT JUST JUICE

There is an art to creating craft cocktails and too often, non-drinkers have been left out of the mix. That's changing, as bars and restaurants respond to more requests for booze-free beverages beyond water, soda, or juice. That said, creating a craft mocktail should incorporate as much care and creativity as their more spirited counterparts. Show your sober friends a good time with these delicious drink recipes that will have them toasting your drink-making abilities.

ELDERFLOWER BLUEBERRY LIME MOCKTAIL

INGREDIENTS

- 2 Tbsp. elderflower syrup
- 1–2 Tbsp. fresh lime juice
- Small handful of blueberries (fresh or frozen)
- 1 cup mineral sparkling water
- Handful of ice
- Fresh mint for garnish
- Lime slices for garnish

INSTRUCTIONS

Combine elderflower syrup, lime juice, and blueberries in a glass. Lightly mash them together with a muddler until some blueberries break and release some juice. Top with ice and lime slices, then pour over with mineral water to fill the glass. Add mint leaves as garnish and serve.

BRÛLÉED LEMON SOUR

INGREDIENTS

- 1 oz. sweet & sour mix
- 1 can Lemon LaCroix
- 1 lemon, sliced
- Cane sugar
- Vodka substitute, premade or make your own with: 2 Tbsp. of water, apple cider, or white grape juice mixed with lime juice.
- 1 sprig rosemary for garnish

INSTRUCTIONS

1. Light the grill. While it heats up,

- slice lemon into $\frac{1}{8}$ " thick slices. Sprinkle both sides of each slice with sugar. Reduce grill's heat, then place each slice directly onto the grill. Allow the lemon to caramelize and slightly char, then carefully flip to repeat on the other side. Remove the slices, and set aside.
2. Shake vodka substitute and sweet & sour mix with ice. Strain into a glass filled with ice and top with Lemon LaCroix. Garnish with brûléed lemon slices and rosemary.

SPARKLING PEACH & THYME MOCKTAIL

INGREDIENTS

- $\frac{1}{4}$ inch fresh ginger, peeled and sliced
- 1 11.15 oz. can Clementine and Peach San Pellegrino Momenti
- 1 ripe peach sliced into $\frac{1}{4}$ -inch pieces
- 1 sprig fresh thyme, plus more to garnish
- Crushed ice
- Sparkling water, if desired

DIRECTIONS

1. Muddle 1 peach slice, peeled ginger, and thyme in a highball glass.
2. Layer in more peach slices, thyme, and crushed ice in the glass and top with San Pellegrino Momenti. For fewer carbs, go half Momenti, half sparkling water.
3. Stir and serve.

CUCUMBER BASIL SPARKLING LEMONADE

INGREDIENTS

- 3-inch length of cucumber, chilled and coarsely chopped (about $\frac{1}{2}$ cup), plus some extra slices for garnish
- 2 to 3 fresh basil leaves, plus more for garnish
- $\frac{1}{4}$ cup fresh lemon juice, plus lemon slices for garnish
- $\frac{1}{4}$ cup still water
- 1 Tbsp. honey or agave nectar
- $\frac{3}{4}$ cup sparkling water, or more to taste

DIRECTIONS

1. Add the chopped cucumber to a blender or food processor with the basil, lemon juice, still water, and honey. Blend until smooth, then distribute evenly between two glasses.
2. Add the sparkling water evenly between the glasses. Drop in a few ice cubes, and garnish with cucumber slices, lemon slices, and basil as desired.

FUN FACT

Fresh herbs not only enhance the flavors of your favorite mocktails, they offer a variety of health benefits. For example, basil can help reduce blood pressure and its fragrance can ease anxiety; rosemary is rich in antioxidants and anti-inflammatory compounds; and thyme is often used as an herbal medicine to help soothe inflamed bronchial tubes.

WHITE PEACH FROSÉ WITH TARRAGON SIMPLE SYRUP

INGREDIENTS

- For the Tarragon Simple Syrup:*
- 4 tarragon sprigs
 - $\frac{1}{4}$ cup sugar
 - $\frac{1}{4}$ cup water

For the Frosé:

- 1 bottle rosé wine (substitute is a sparkling non-alcoholic rosé)
- 4 to 5 white peaches, peeled and chopped
- 1 cup ice cubes

DIRECTIONS

1. Pour non-alcoholic rosé into a 9x13 baking dish and freeze for about six hours, or until almost solid.
2. Make the tarragon simple syrup: add tarragon, sugar, and water to a medium saucepan; bring to a boil, then reduce heat to a simmer and heat until sugar dissolves, about 3 minutes. Remove from heat and let cool completely. Strain into a container and discard tarragon.
3. Scrape the frozen rosé out of the pan and into a blender. Add peaches, 2–3 tablespoons of simple syrup, and ice. Blend until smooth. Pour into glasses and serve immediately.



STILL THIRSTY? FIND MORE MIXOLOGY AT CambriaUSA.com/Style

Sourcebook



BRITTANICA WARM MATTE™
WHITE CLIFF MATTE™

STYLE + DESIGN

No. 1 Simple Elegance

KITCHEN PG 10: Cabinets and hardware by Christopher Peacock, peacockhome.com. Island countertops in White Cliff Matte by Cambria, CambriaUSA.com. Backsplash and perimeter countertops in Britannica Warm Matte by Cambria, CambriaUSA.com. Cooktop and dishwasher by Gaggenau, gaggenau.com. Pendant light fixtures by Circa Lighting, circalighting.com.

No. 2 Mountain Modern

KITCHEN AND BEVERAGE STATION PG 11: Cabinets from Homestead Custom Cabinetry, homesteadcustomcabinetry.com. Turquoise glass cabinet panels by Element Designs,

element-designs.com. Custom range hood by Twenty1Five, twenty1five.com. Island and perimeter countertops in Delгатie by Cambria, CambriaUSA.com. Counter dining table in Devon by Cambria, CambriaUSA.com. Bar backsplash tile in Lava Calda Peacock by Ann Sacks, annsacks.com. Dining chairs from Adriana Hoyos, adrianahoyos.com. Hardware by Buster + Punch, busterandpunch.com. Solna faucet by Brizo, brizo.com. Odin bar faucet by Brizo, brizo.com. Ikon sink from Blanco, blanco.com. Bar sink by Native Trails Ventana, nativetrailshome.com. Refrigerator, freezer, wine cooler from Sub-Zero, subzero-wolf.com. Contemporary M Series cooktop, wall oven, and microwave from Wolf, subzero-wolf.com/wolf. Dishwashers from

Viking, vikingrange.com. Ceramic floor tile in Cast Iron White by Apavisa, apavisa.com.

No. 3 Bright Outlook

KITCHEN PG 12: Contractor is BHC Solutions, bhcsolutions.com. Kitchen millwork by Designström, designstrom.com. Cabinet color is Dayroom Yellow by Farrow & Ball, farrow-ball.com. Wall color is Simply White by Benjamin Moore, benjaminmoore.com. Countertops in Salt Lake by Cambria, CambriaUSA.com. Backsplash Salttilo tile in Athena light blue (star design). White faucet by Rubinet, rubinet.com. Pendant lights in Dusk Pink from Stylegarage, stylegarage.com. Range by Bertazzoni, bertazzoni.com. Refrigerator by Fisher Paykel, fisherpaykel.com. Dishwasher by ASKO, lb.asko.com.

No. 4 Mellow Drama

BATHROOM PG 13: Mersey countertops by Cambria, CambriaUSA.com. Vessel sink by MTI Baths, mtibaths.com. Sconce light fixtures by Arteriors, arteriorshome.com. Oyl Components collection faucet in matte black by Kohler, kohler.com.

No. 5 Party Ready

LEARNING KITCHEN PG 14: Countertops in Hollinsbrook Matte and Montana Midnight Matte by Cambria, CambriaUSA.com. Wallpaper by Cole & Son, cole-and-son.com. Tile by Artistic Tile, artistictile.com. Cabinets by Christopher Peacock, peacockhome.com. Fixtures by Kohler, kohler.com. Pendant lights by Arteriors, arteriorshome.com. Barstools from Serena & Lily, serenaandlily.com. Art Deco chandelier from Curry & Company, curreyandcompany.com.

No. 6 Statement Style

BATHROOM PG 15: White honed pennylane wall and floor tile from Artistic Tile, artistictile.com. Vanity countertop and wall in Rose Bay Matte by Cambria, CambriaUSA.com. Mirrors from The Joseph Company, josephcompany.com.

CRAFTED

Bright Ideas

KITCHEN PG. 16: Everleigh countertops by

Cambria, CambriaUSA.com. Lighting by Curry & Company, curryandcompany.com.

DINING PG. 17: Lighting by Hennepin Made, hennepinmade.com.

STYLE FILES



Designed for Wellness

KITCHEN PG 18: Island and perimeter countertops, backsplash, and range hood in Delgatie by Cambria, CambriaUSA.com.

ACCESSORIES PG 21: Afton chair with natural fabric, Gardner wall sconce in black, Saco Module Stackers storage container, and Rava rug all from Room & Board, roomandboard.com.



Renewed with Character

LOUNGE PG 22: Coffee table from Timber & Tulip, timberandtulip.com. Rug from Kentucky Rose Designs, kyrosedesigns.com. Lighting by Circa Lighting, circalighting.com. Kipton sofa and Rowland leather armless motion recliner from Arhaus, arhaus.com. Beverage cooler from Zephyr, zephyronline.com. Bar countertop in Ella by Cambria, CambriaUSA.com. Sculptures and accessories from construction2style, construction2style.com.

DINING PG 23: Jute rug from West Elm, westelm.com. Patterned rug from Amazon, amazon.com. Gold dining chairs from Anthropologie, anthropologie.com. Chandelier from Arhaus, arhaus.com.



KITCHEN PG 24: Cabinet hardware from Etsy, etsy.com. Lighting from Wayfair, wayfair.com. Perimeter and island countertops in Harlow by Cambria, CambriaUSA.com. Zellige weathered white backsplash tile by Clé Tile, cletile.com.

Inspired by Nature

KITCHEN PG 26, 28: Wall paint throughout in Classic Gray OC-23 by Benjamin Moore, benjaminmoore.com. Ceiling and trim paint in Super White OC-152 by Benjamin Moore,

Sourcebook

benjaminmoore.com. Cabinetry by Windmill Cabinets, **windmillcabinets.com.** Colton countertops by Cambria, **CambriaUSA.com.** Cooktop, wall oven, microwave/speed oven, and refrigerator by JennAir, **jennair.com.** Dishwasher by Bosch, **bosch.com.** Faucet and sink by Kohler, **kohler.com.** Pendant fixtures from Restoration Hardware, **rh.com.**

Wall sconces from Stoffer Home, **stofferhome.com.** Flash ivory backsplash tile from Sarana Tile, **saranatile.com.**
DINING PG 27: Brittanica Gold Cool tabletop, CambriaUSA.com. Rockface fireplace stone from ERT H Coverings, **erthcoverings.com.**
LAUNDRY PG 29: Cabinetry by Windmill



Cabinets, **windmillcabinets.com.** Torquay countertops by Cambria, **CambriaUSA.com.** Sink by Blanco, **blanco.com.** Faucet by Delta Faucet, **deltafaucet.com.** Backsplash tile in arctic white matte from Olympia Tile, **olympiatile.com.** Aurora bell and dome pendant lights in satin brass, Kori hamper, Axton pull in graphite, and Kasari rug from Room & Board, **roomandboard.com**

FEATURES

Weekend Retreat

KITCHEN PG 30–31: Cabinetry by Artcraft Kitchens, **artcraftkitchens.com.** Ava counter stools with Pearl Chatou bouclé fabric from Rove Concepts, **roveconcepts.com.** New York plank Central Park flooring in white oak from Beckham Brothers, **beckhambros.com.** Maple reeded panels in maple on island and butler's cabinetry with black titanium gray glass doors. Gavin brass and black pendant lights from Savoy House, **savoylightinglights.com.** Cornufé range in black and brass from La Cornue, **lacornueusa.com.** Countertops and backsplash in Ella Matte by Cambria, **CambriaUSA.com.**

PANTRY PG 32: Marni pendant light in natural brass from Alora, **aloralighting.com.** Clare countertops by Cambria, **CambriaUSA.com.** Cabinetry by Artcraft Kitchens, **artcraftkitchens.com.** Cabinetry paint in Swiss Coffee by Benjamin Moore, **benjaminmoore.com.** Maple open shelving on brass bistro shelf brackets.

DEN PG 33: Judkins green velvet accent chair from AllModern, **allmodern.com.** Seville rug from EQ3, **eq3.com.**

BEDROOM PG 33: Forte green velvet king bed, Orleans upholstered boucle bench, and Myriad hand-knotted area rug from CB2, **cb2.com.** Chandelier and pendant lighting in oxidized gold from Matteo Lighting, **matteolighting.com.**

LANDING PG 33: Mosaico Nantes Caliza



30



wall tiles in arch from Porcelanosa, porcelanosa-usa.com. Railing and spindles in solid brass and white oak. Bruno wallpaper in Sand from Rebel Walls, rebelwalls.com.

POWDER ROOM PG 34: Custom sink in Skara Brae by Cambria, CambriaUSA.com. Faucet by Brizo, brizo.com.

DRESSING TABLE PG 35: Needville Modern & Contemporary Accent Mirror by Greyleigh. Oxidized gold pendant light from Matteo Lighting, matteolighting.com. Cabinetry by Artcraft Kitchens, artcraftkitchens.com.

BATHROOM PG 35: Avalon charcoal concrete tub by Native Trails, nativetrailshome.com. Amanda chandelier in aged brass with opal glass from Dainolite, dainolite.ca.

In Real Life

KITCHEN PG 36, 39: Colton countertops and backsplash by Cambria, CambriaUSA.com.

Going Off Script

GARAGE PG 42: Checkerboard floor tiles in Montana Midnight and Minnesota Snow by Cambria, CambriaUSA.com.

PURSUIITS

OPENER PG 51: Delgatie countertop by Cambria, CambriaUSA.com. Modern Bartender's best stemmed coupe 2 piece set from Amazon, amazon.com. Vintage small white pitcher.

Zero Proof



PG 58: Marta double old-fashioned glass from CB2, cb2.com. Tondo acacia coaster set of 4 from Crate & Barrel, crateandbarrel.com.

PG 59: Marta double old-fashioned glass from CB2, cb2.com.

PG 60: Edge tall glass and Bitty Bite short glass from Crate & Barrel, crateandbarrel.com.

Vintage tray. Charvet Editions linen DouDou Petale tea towel from Isles Studio, islesstudio.com.

PG. 61: A Coste low etched glass by Athena Calderone from Crate & Barrel, crateandbarrel.com.

25

Celebrating twenty-five issues of Cambria Style



It seems like yesterday that *Cambria Style* was just an idea, but millions of copies and captivated readers later, *Cambria Style*'s 25th issue is here! Enjoy this look back at over 13 years of our design innovation, lifestyle stories, and celebrity features that have inspired us all.



EXPLORE ALL 25 ISSUES OF *CAMBRIA STYLE* AT
CambriaUSA.com/Style



BRITTANICCA GOLD WARM™



COLLABORATIONS THAT PUSH LIMITS

Teaming up with trendsetters to bring you the best of dynamic design.

Meet our Cambria Collaborators at CambriaUSA.com/Collaborators.



VANESSA DELEON

VANESSA DELEON ASSOCIATES



**FAMILY OWNED
AMERICAN MADE**



CAMBRIA®
COLLABORATORS